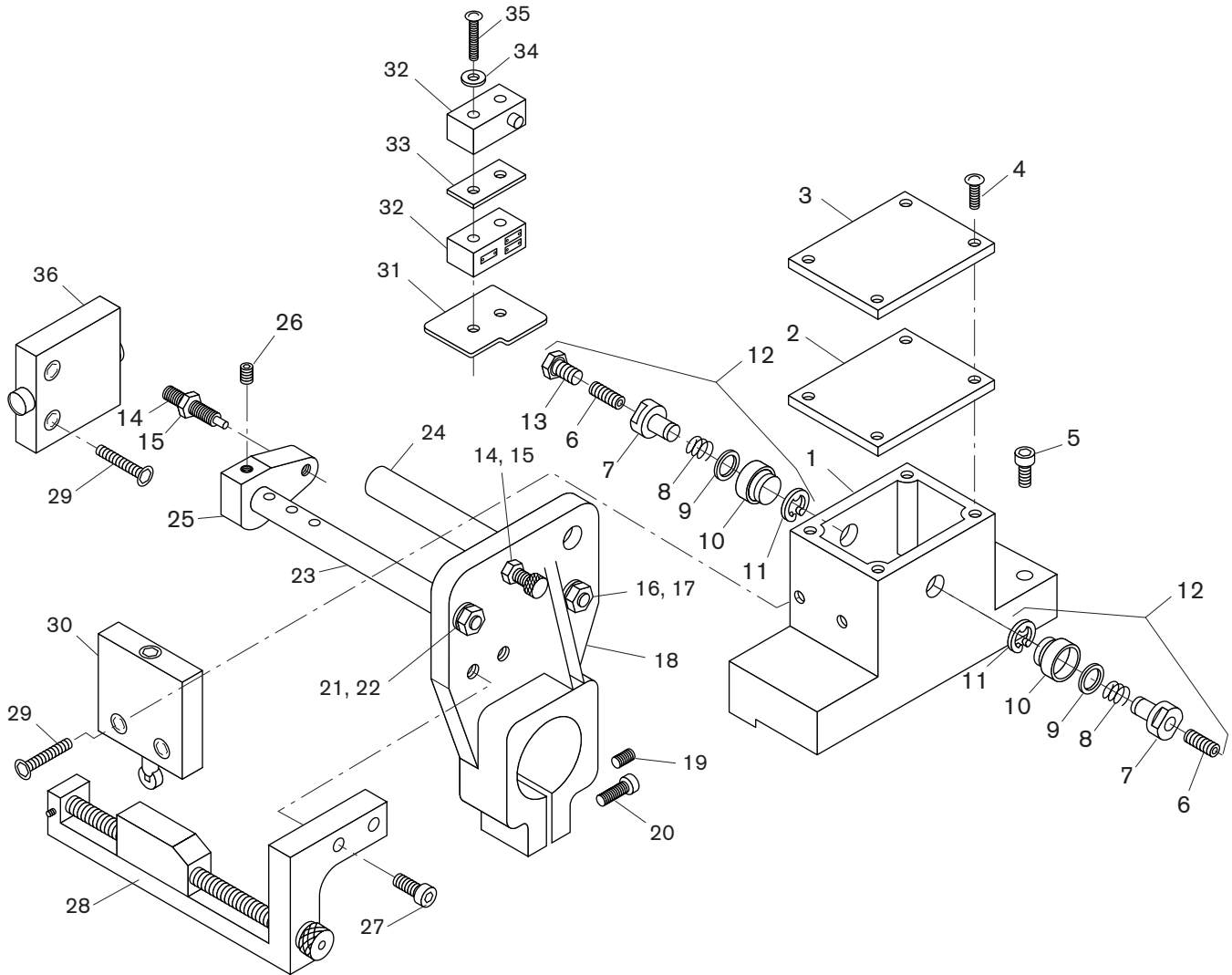


LS-500 LEAD SCREW STROKE CONTROL ASSEMBLY


Item No.	Number Required	Part No.	Description	Item No.	Number Required	Part No.	Description
1	1	1836	Switch Box	19	1	-	$\frac{3}{8}$ - 16 x $\frac{3}{4}$ SHSS
2	1	1846	Switch Box Gasket	20	2	-	$\frac{5}{16}$ - 18 x $1\frac{3}{4}$ SHCS
3	1	1845	Switch Box Cover	21	1	-	$\frac{3}{8}$ - 24 Jam Nut
4	4	-	6 - 32 x $\frac{3}{8}$ RHMS	22	1	-	$\frac{3}{8}$ Lockwasher
5	2	-	$\frac{5}{16}$ - 18 x $\frac{7}{8}$ SHCS	23*	1	4878	Actuating Rod
6	2	-	8 - 32 x $\frac{5}{8}$ SHSS (Nylok)	24*	1	4877	Guide Rod
7	2	4698	Actuating Pin	25	1	1839	Depth Switch Cam
8	2	814	Actuating Pin Spring	26	1	-	$\frac{5}{16}$ - 18 x $1\frac{1}{2}$ SHSS
9	2	-	"O" Ring #AN6227B-5	27	2	-	$\frac{1}{4}$ - 20 x $\frac{3}{4}$ SHCS
10	2	4699	Actuating Pin Bushing	28*	1	5138	Cam Bar Assembly
11	2	-	Snap Ring 5133-25	29	4	-	10 - 32 x $\frac{3}{4}$ SHCS
12†	1	7970	Actuating Pin Assembly (includes Items 6, 7, 8, 9, 10, 11, & 13)	30	1	914CE2-6A	Cam Operated Switch
13†	1	-	Screw #10-32 Hex Head	31	1	809	Bottom Gasket
14	1	S54AN	Depth Actuating Screw	32	2	BZ2RD331	Micro-Switch
15	2	-	$\frac{1}{4}$ - 28 Jam Nuts	33	1	267	Spacer
16	1	-	$\frac{1}{2}$ - 20 Jam Nut	34	2	-	Washer
17	1	-	$\frac{1}{2}$ Lockwasher	35	2	-	6 - 32 x $1\frac{3}{4}$ RHMS
18	1	4825	Quill Clamp	36	1	914CE1-6A	Motor Start Switch

* NOTE: Items 23, 24 and 28 – Specify stroke length

† NOTE: 7970 Assembly - Item #13 on Depth Only