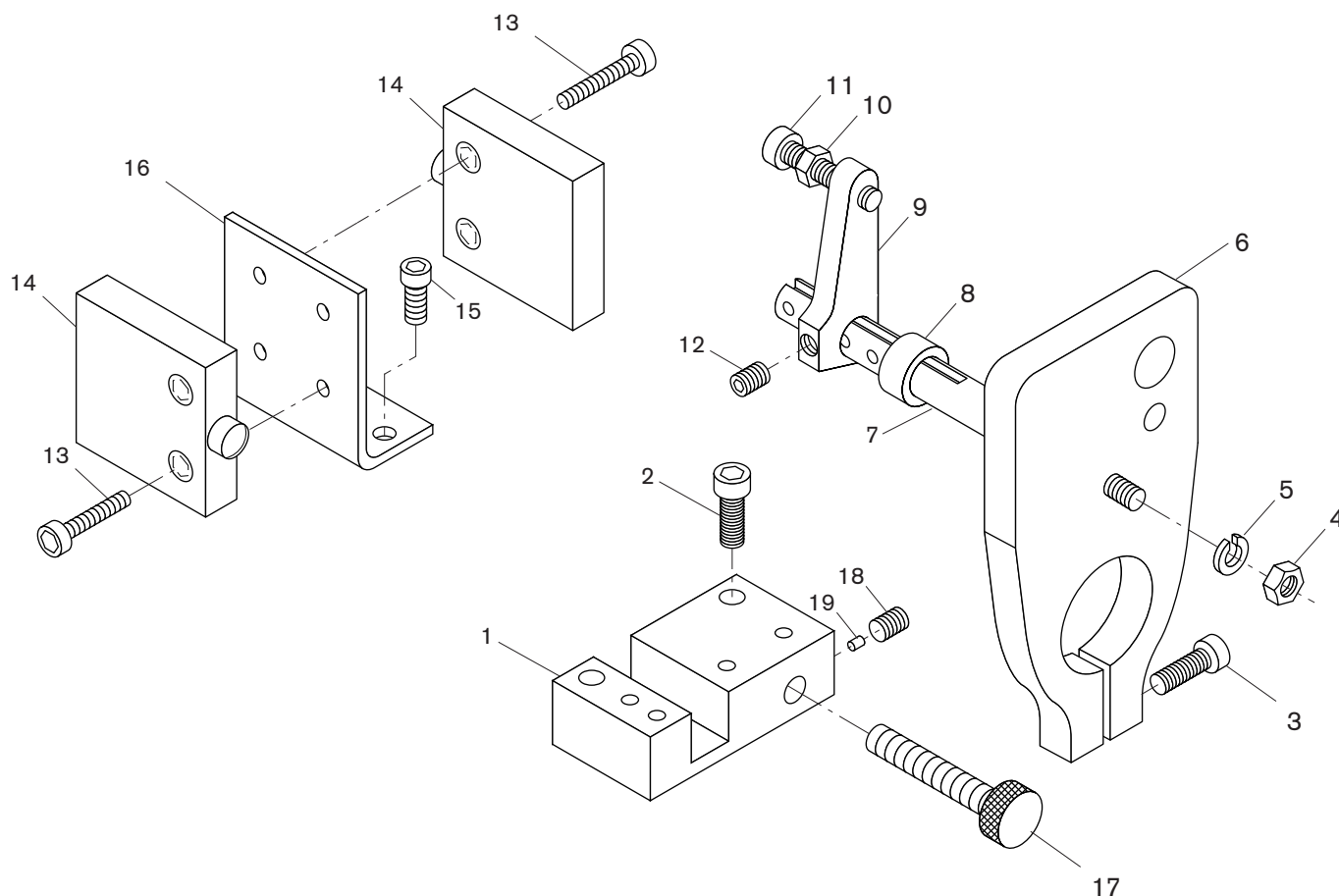


**200 SERIES STROKE CONTROL ASSEMBLY
 WITH POSITIVE STOP**


Item No.	Number Required	Part No.	Description	Item No.	Number Required	Part No.	Description
1	1	1387	Stroke Control Base	11	1	819	Depth Adjusting Screw
2	2	-	1/4 - 20 x 7/8 SHCS	12	1	-	1/4 - 20 x 3/8 SHSS
3	1	-	1/4 - 20 x 1 1/2 SHCS	13	4	-	10 - 32 x 1/2 SHCS
4	1	-	1/4 - 20 Jam Nut	14	2	914CE1-6A	Micro-Switch
5	1	-	1/4 Lockwasher	15	2	-	10 - 32 x 3/8 SHCS
6	1	8157	Quill Clamp	16	1	22355	Switch Bracket
7*	1	1332	Guide Actuating Rod	17*	1	1386	Positive Stop Rod
8	1	1327	Stop Collar	18	1	-	5/16 - 18 x 3/8 SHSS
9	1	1329	Depth Switch Cam	19	1	2030	Nylon Slug 1/4 OD x 1/4 Lg
10	1	-	1/4 - 28 Jam Nut				

* NOTE: Items 7 and 17- Specify stroke length, 2" or 4"