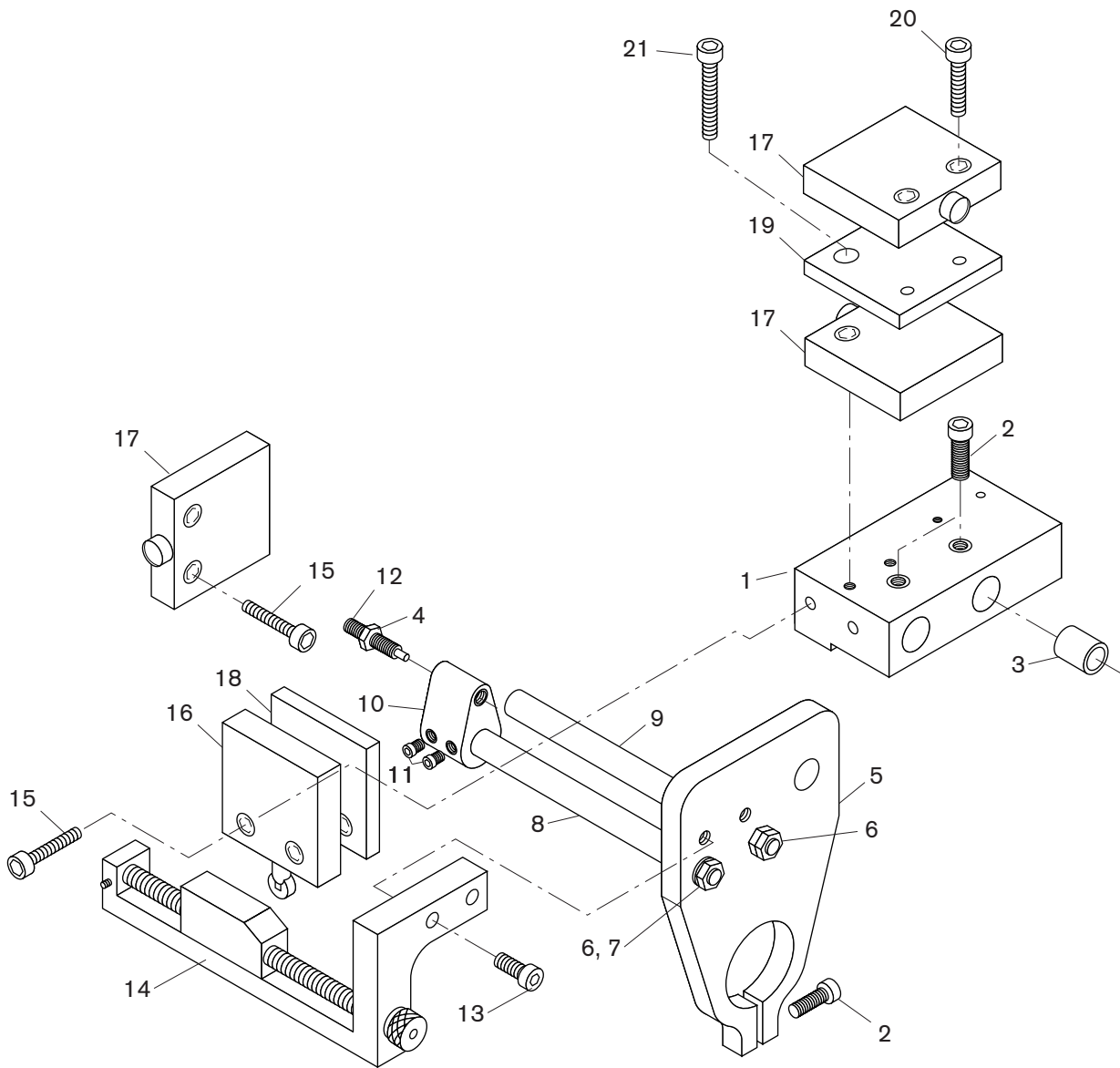


**LS-300 LEAD SCREW STROKE CONTROL ASSEMBLY**



Item No.	Number Required	Part No.	Description	Item No.	Number Required	Part No.	Description
1	1	22454	Stroke Control Base	12	1	S54AN	Depth Actuating Screw
2	3	-	1/4 - 20 x 1 1/4 SHCS	13	2	-	1/4 - 20 x 3/4 SHCS
3	1	B-14	Guide Rod Bushing	14*	1	5138	Cam Bar Assembly
4	1	-	1/4 - 28 Jam Nut	15	2	-	10 - 32 x 3/4 SHCS
5	1	902	Quill Clamp	16	1	914CE2-6A	Cam Operated Switch
6	3	-	3/8 - 24 Jam Nut	17	3	914CE1-6A	Motor Start, Depth Interlock Switch
7	1	-	3/8 Lockwasher	18	1	22453	Spacer
8*	1	812	Actuating Rod	19	1	22433	Spacer
9*	1	804	Guide Rod	20	2	-	10 - 32 x 5/8 SHCS
10	1	22431	Depth Switch Cam	21	2	-	10 - 32 x 1 1/8 SHCS
11	2	-	8 - 32 x 1/2 SHCS				

\* NOTE: Items 8, 9 and 14 – Specify stroke length