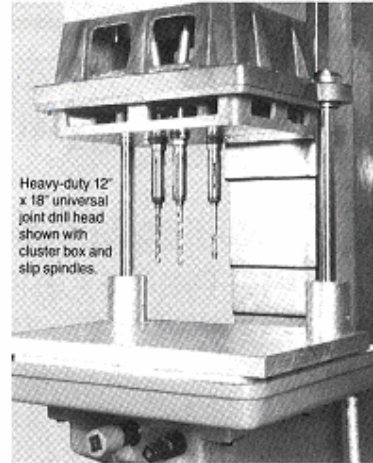
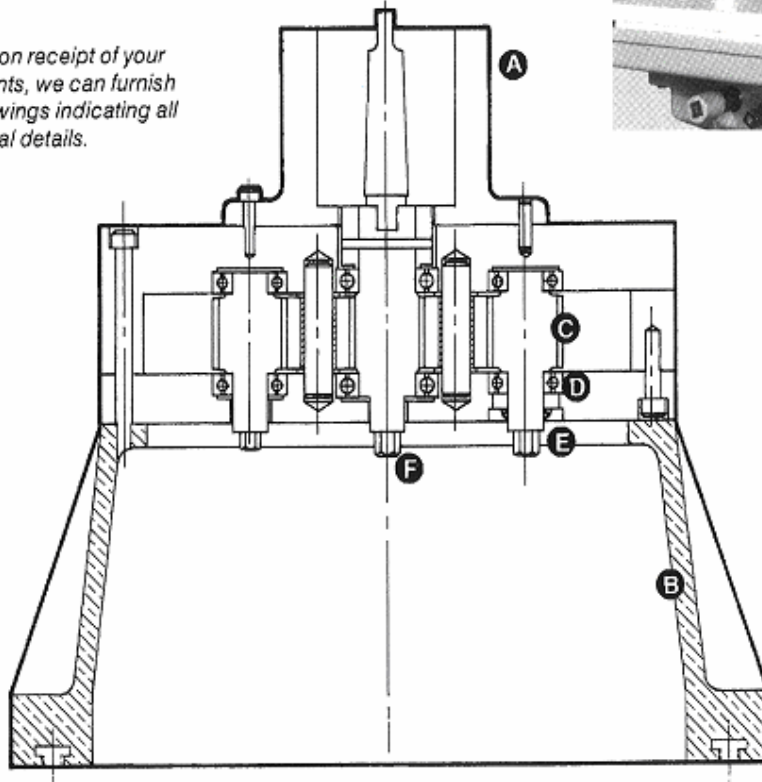


typical universal joint head construction

- Available in round and rectangular sizes from 4" round to 4 x 36" rectangular.

NOTE: Upon receipt of your requirements, we can furnish layout drawings indicating all dimensional details.



Heavy-duty 12" x 18" universal joint drill head shown with cluster box and slip spindles.

- A. Adaptable to most drill, tap, or feed units
- B. Cast Tenzalloy housing
- C. Gears are 4140 rolled or cut, heat treated to proper hardness
- D. Highest quality ball bearings are used
- E. Seals optional if required
- F. Hex pick-off sizes and location available to suit application

Multi-Drill low profile universal joint multiple spindle drill/tap heads are available in a wide range of head shapes and sizes. Round heads are available in sizes from 4" to 12" diameter and in rectangular shapes from 4" x 15" up to 4 x 36".

Due to Multi-Drill unique two-piece construction utilizing a separate removable gear case a wide variety of size and location of hex pick-offs are available.

Multi-Drill universal joint drill heads can be used with adjustable arm assemblies or with fixed spindle plates.