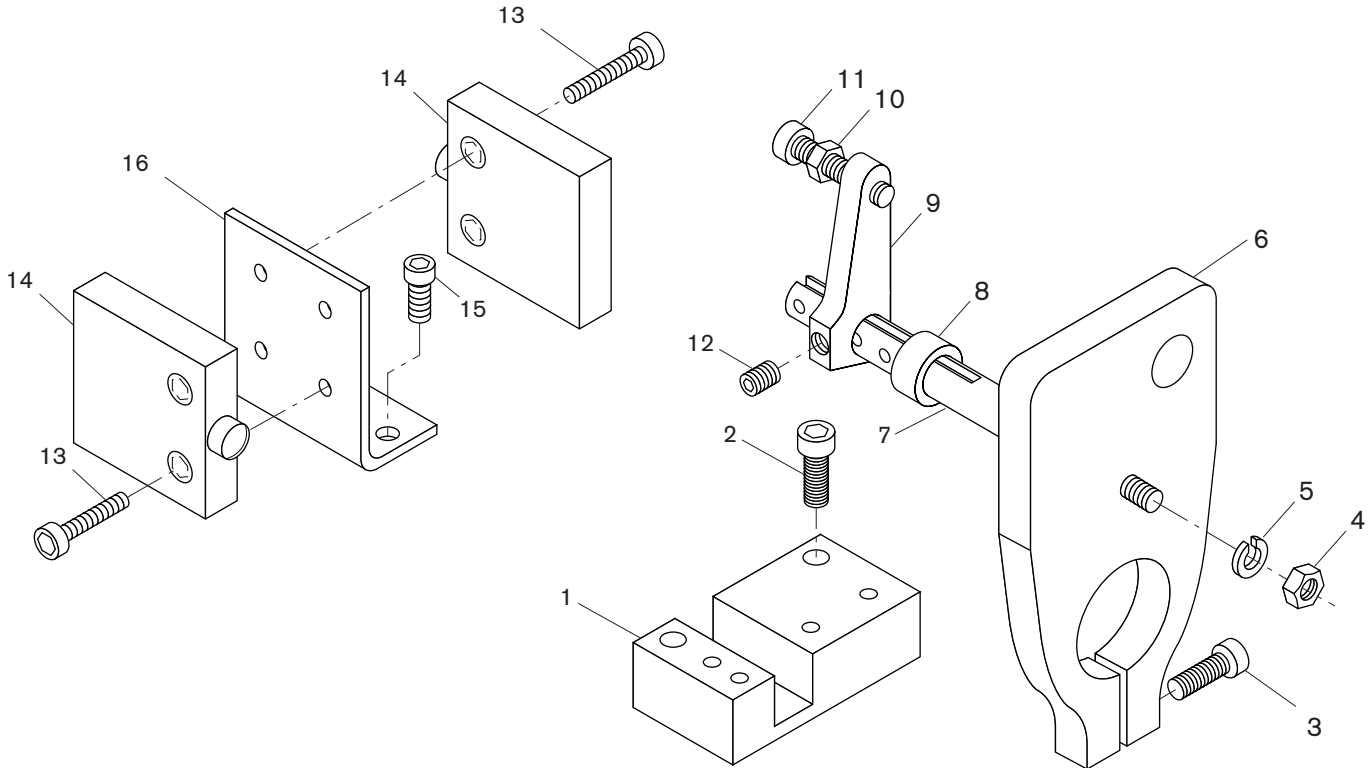


**200 SERIES STROKE CONTROL ASSEMBLY**



Item No.	Number Required	Part No.	Description	Item No.	Number Required	Part No.	Description
1	1	1331	Stroke Control Base	9	1	1329	Depth Switch Cam
2	2	-	1/4 - 20 x 7/8 SHCS	10	1	-	1/4 - 28 Jam Nut
3	1	-	1/4 - 20 x 1 1/2 SHCS	11	1	819	Depth Adjusting Screw
4	1	-	1/4 - 20 Jam Nut	12	1	-	1/4 - 20 x 3/8 SHSS
5	1	-	1/4 Lockwasher	13	4	-	10 - 32 x 1/2 SHCS
6	1	1328	Quill Clamp	14	2	914CE1-6A	Micro-Switch
7*	1	1332	Guide Actuating Rod	15	2	-	10 - 32 x 3/8 SHCS
8	1	1327	Stop Collar	16	1	22355	Switch Bracket

\* NOTE: Items 7 – Specify stroke length, 2" or 4"