

MEMOLUB® ONE



Single-Point Automatic Lubricator

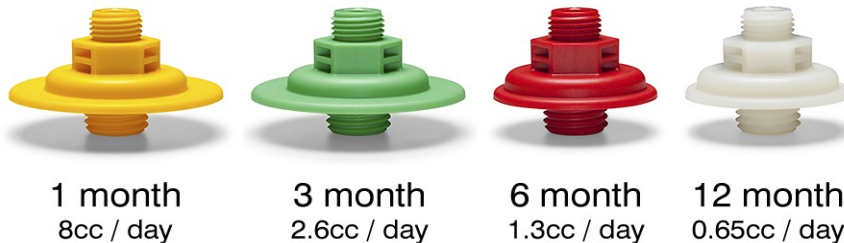
General Description

The MEMOLUB® ONE is a reusable, battery powered, electro-mechanical lubricator designed for single-point applications. The MEMOLUB® ONE uses the same proven mechanical design as existing MEMOLUB® models but in a lower output pressure version and with a highly simplified programming method. It's constant 140psi lubricant output pressure allows the unit to be direct mounted or remote mounted up to 6 feet away from the lube point. It is currently available in a 240cc model. The MEMOLUB® ONE is self-contained with no external wiring required and can be used plant wide on a variety of applications.



Programming the ONE

The MEMOLUB® ONE daily lubricant output is programmed using the simple LPS MEMO system. The Yellow, Green, Red and White timing MEMOs determine how long it takes to empty the lubricant cartridge. There are four basic time settings 1, 3, 6 and 12 months that can handle most applications. Once the appropriate LPS MEMO is installed, the program is retained in the MEMO fitting allowing the user to install a different MEMOLUB® ONE lubricator and follow the same output program.



1 month
8cc / day

3 month
2.6cc / day

6 month
1.3cc / day

12 month
0.65cc / day


Operation

The MEMOLUB® ONE metered positive displacement pump has been primed before shipment and is ready for use. On first installation, all fittings, lube lines and bearings should be pre-charged with the same lubricant that was ordered with the MEMOLUB® ONE lubricator. Next, install the appropriate LPS MEMO fitting with the metal adapter on your lube point. Screw the MEMOLUB® ONE on the MEMO fitting. The unit will cycle once and proceed to follow the program setting. Periodic visual inspection is recommended for all MEMOLUB® lubricators.

When the lubricant cartridge is empty, unscrew the MEMOLUB® ONE lubricator from the MEMO fitting. Place the unit on a firm surface, outlet end down. Push down on the clear plastic housing while turning the black plastic locking ring counter-clockwise. The housing and spring assembly will separate from the pump base. Remove the empty cartridge and battery pack and replace with a new one.

Refer to these other

- The LPS MEMO System
- Pre-filled Nylon Tubing
- Installation Parts
- Protective Cover
- Warranty & Safety
- Mounting Brackets

 **PLI, LLC**
www.memolub.com
800.635.8170 Toll-Free
262.637.8170 Local
262.637.4090 Fax

MEMOLUB® ONE



Single-Point Automatic Lubricator

Specifications

Operation:	Electro-Mechanical, Positive displacement pump
Lubricant cartridge capacity:	240cc (Replaceable)
Compatible lubricants:	Oils or Grease (to NLGI #2)
Connection thread:	1/4 R Male (1/4"NPT Adapter included)
Max operating pressure:	140psi (10 bar)
Temperature range:	5°F to 120°F (-15°C to 50°C)
Output timing settings:	1, 3, 6 or 12 month settings
Power supply:	4.5VDC Alkaline battery pack
External On/Off Control	No
Remote installation:	Up to 6 feet (2 meters), single-point
Reusable:	Yes
Multi-Point capable:	No
Warranty:	3 Year limited

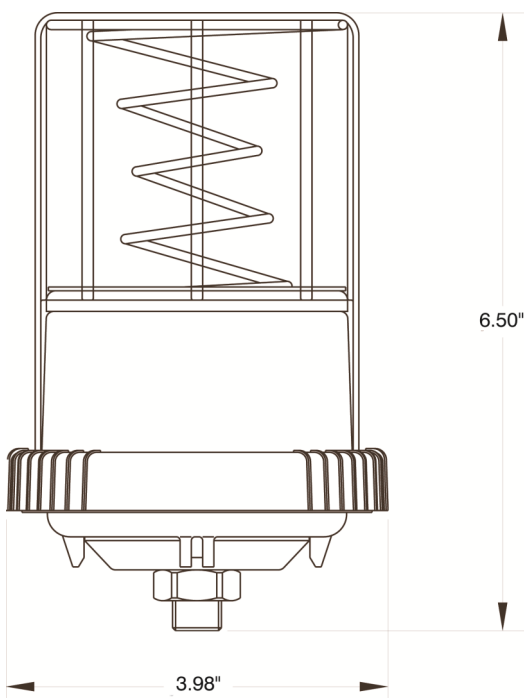
Application Photo



Motor application




Protective Cover



Typical Applications

- Electric Motors
- Pumps
- Fans
- Conveyors

 **PLI, LLC**
www.memolub.com
800.635.8170 Toll-Free
262.637.8170 Local
262.637.4090 Fax

MEMOLUB® ONE

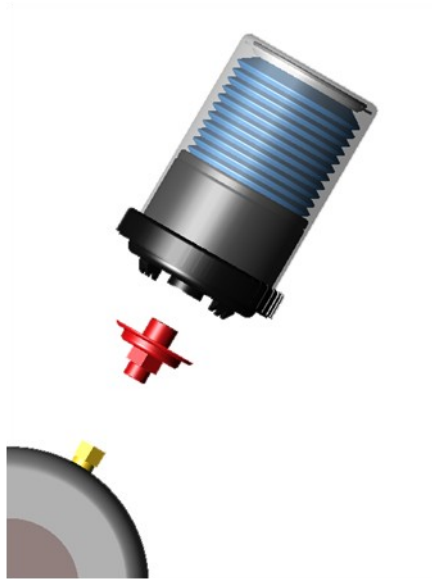
Single-Point Automatic Lubricator



Installation Instructions



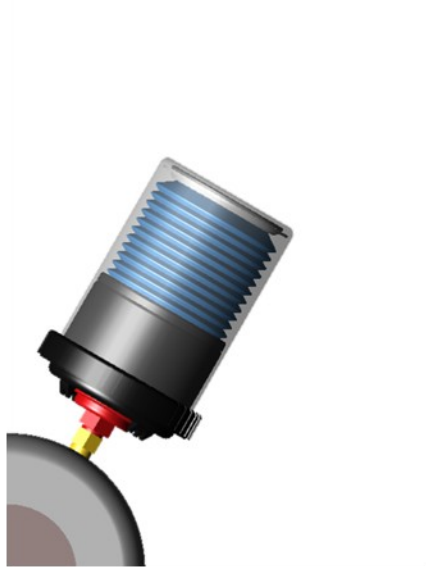
The MEMOLUB® ONE is easy to install.




Step 1 - Install the metal adapter onto the lube point.



Step 2 - Hand tighten the plastic MEMO fitting into the metal adapter.



Step 3 - Screw the MEMOLUB® ONE lubricator onto the plastic MEMO fitting.

 **PLI, LLC**
www.memolub.com
800.635.8170 Toll-Free
262.637.8170 Local
262.637.4090 Fax