

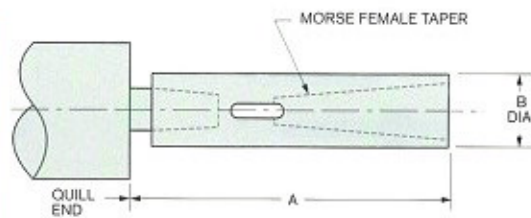
# ADAPTERS & CHUCKS

## SPINDLES

### SPINDLE ADAPTERS

#### Adapters – Morse Female Taper

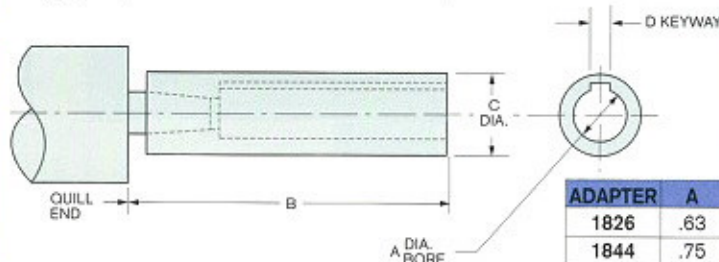
(To fit standard #2  
Jacobs taper spindles)



TAPER	ADAPTER	A	B
#1	1822-1	4.13	.88
#2	1822-2	4.75	1.00
#3	1822-3	5.50	1.25

#### Adapters – Straight Bore

For adjustable adapters  
(To fit standard #2  
Jacobs taper spindles)

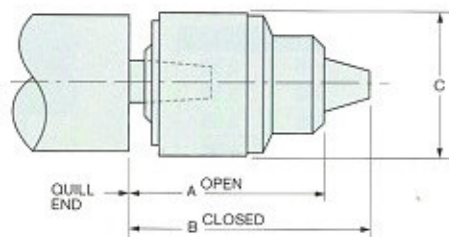


ADAPTER	A	B	C	D
1826	.63	4.31	1.06	.16
1844	.75	4.31	1.38	.16
1834	.88	4.50	1.38	.19

### DRILL AND TAP CHUCKS

#### Drill Chucks

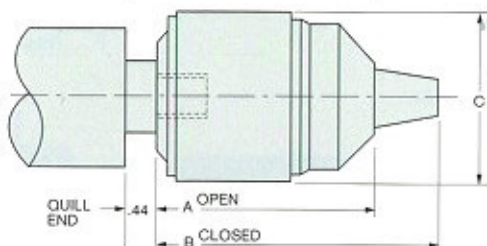
(Plain bearing key type –  
to fit standard #2 Jacobs  
taper spindles)



CHUCK	A	B	C	CAP.
#2A	2.38	3.00	1.69	0-.38
#34-02	3.00	3.88	1.94	0-.50

#### Drill Chucks

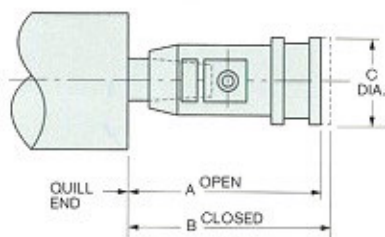
(Plain bearing key type –  
to fit threaded  
nose spindles)



CHUCK	A	B	C	CAP.
3B-5/8-16	2.88	3.81	2.31	.13-.63

#### Tap Chucks

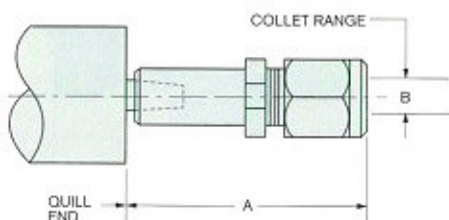
(To fit standard #2  
Jacobs taper spindles)



CHUCK	A	B	C	CAP.
421-02	2.50	2.88	1.13	0-.25
441-02	3.13	3.38	1.50	#10-.50
440-02	3.13	3.38	1.50	.31-.63

#### Collet Chucks

(To fit standard #2  
Jacobs taper spindles)



CHUCK	A	B
#209	.13-.38	2.87
#109	.25-.56	3.25

SPINDLES

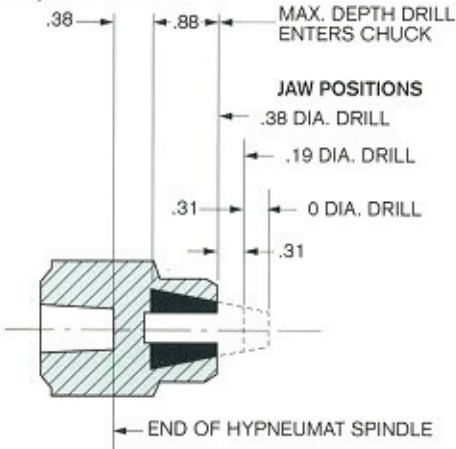
# CHUCK DATA

## SPINDLES

FOR  
STANDARD  
#2 JACOBS  
MALE TAPER  
SPINDLES

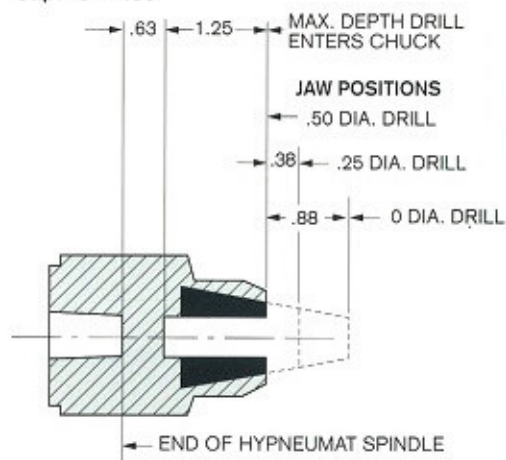
### 2A JACOBS DRILL CHUCK

Cap. 0 - .38



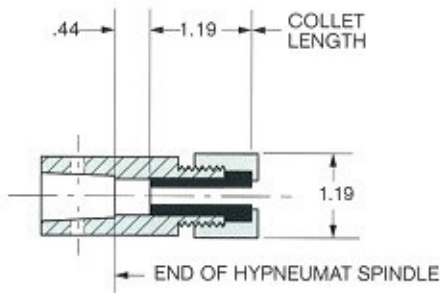
### 34-02 JACOBS DRILL CHUCK

Cap. 0 - .50



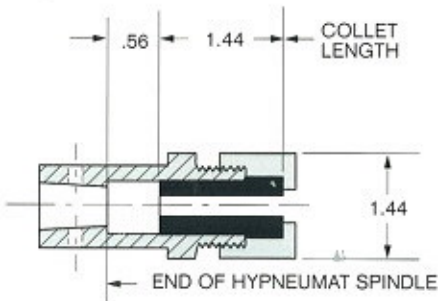
### 209 ERICKSON COLLET CHUCK

Cap. .13 - .38



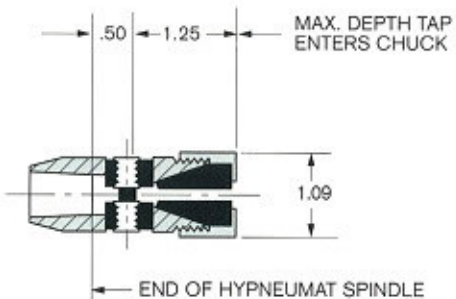
### 109 ERICKSON COLLET CHUCK

Cap. .25 - .56



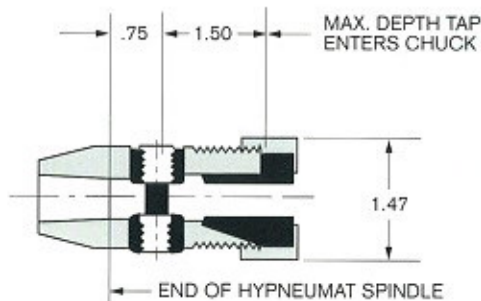
### 421-02 JACOBS TAP CHUCK

Cap. 0 - .25



### 441-02 & 440-02 JACOBS TAP CHUCK

441-02 Cap. 10 - .50      440-02 Cap. .31 - .63



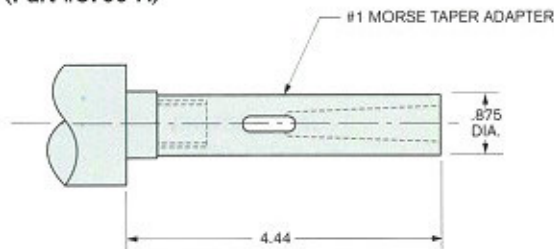
SPINDLES



# THREADED ADAPTERS SPINDLES

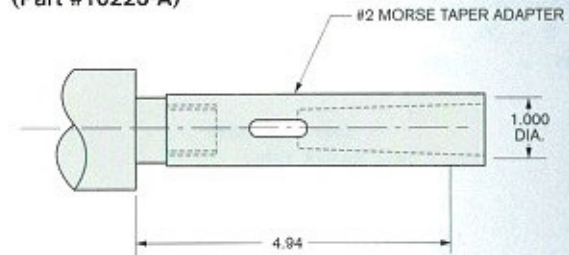
## #1 MORSE TAPER

(Part #8799-A)



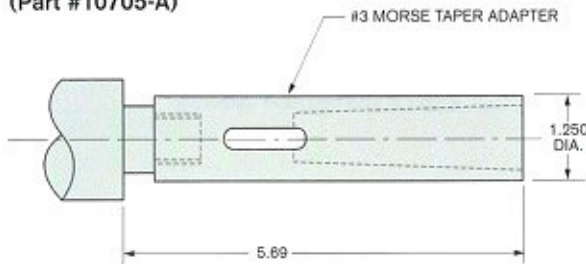
## #2 MORSE TAPER

(Part #10223-A)



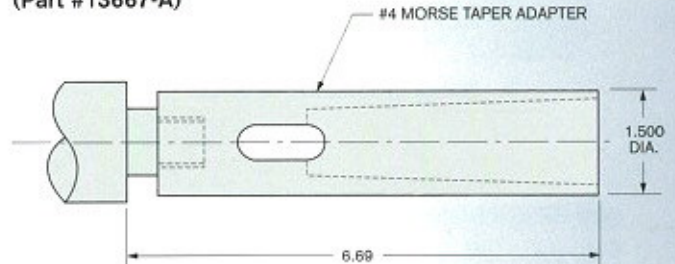
## #3 MORSE TAPER

(Part #10705-A)



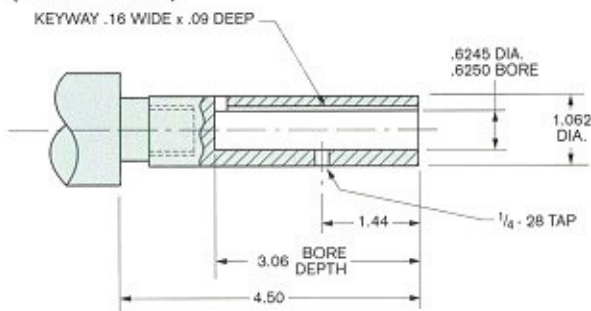
## #4 MORSE TAPER

(Part #13667-A)



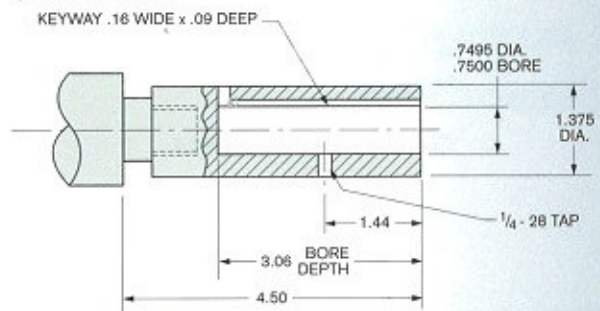
## .625 BORE

(Part #13316-A)



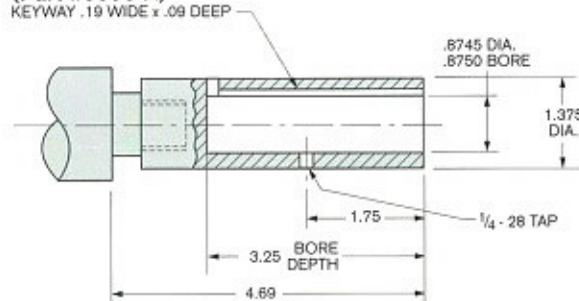
## .750 BORE

(Part #8712-A)



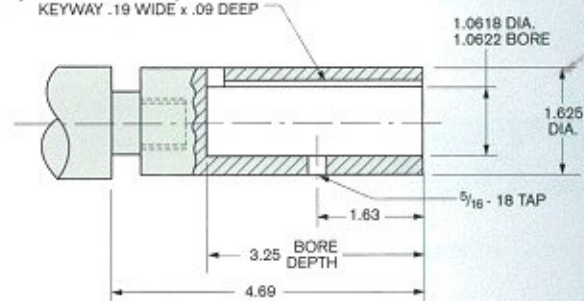
## .875 BORE

(Part #9096-A)



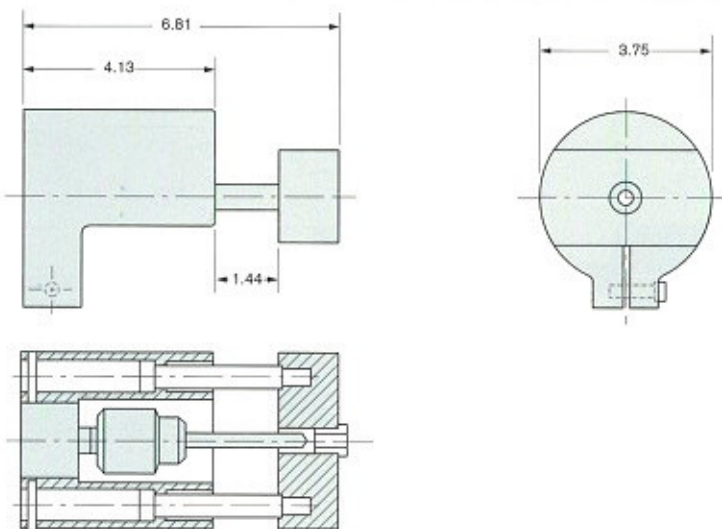
## 1.062 BORE

(Part #16030-A)



SPINDLES

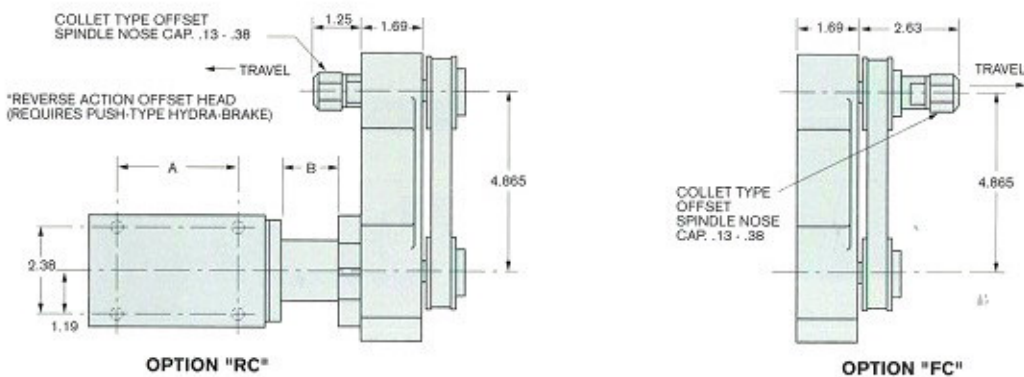
# SPECIAL ATTACHMENTS



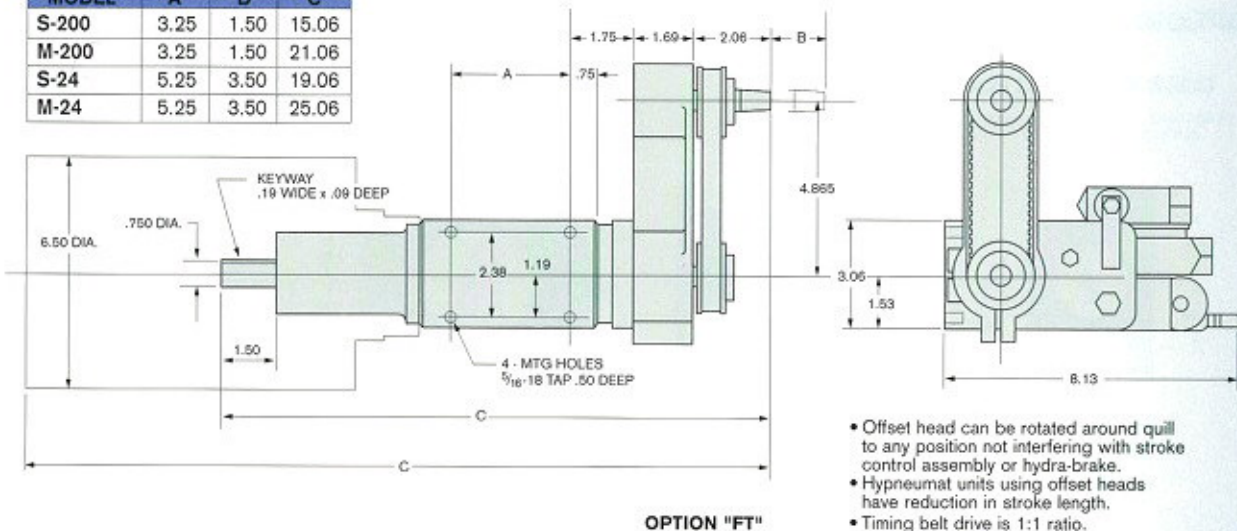
## BUSHING PLATE FOR 200 & 300 SERIES UNITS

When bushing plate is used with 300 series units stroke is reduced by .44"

## OFFSET HEAD FOR 200 & 300 SERIES UNITS



MODEL	A	B	C
S-200	3.25	1.50	15.06
M-200	3.25	1.50	21.06
S-24	5.25	3.50	19.06
M-24	5.25	3.50	25.06



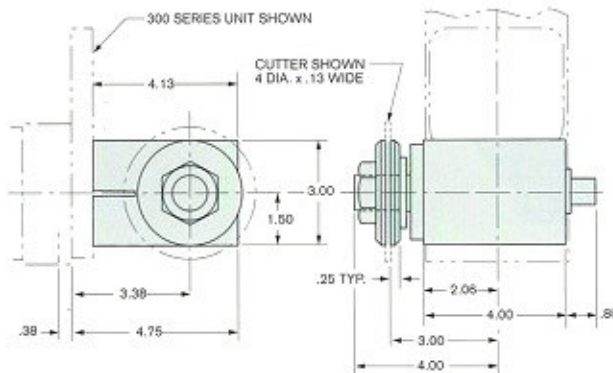
- Offset head can be rotated around quill to any position not interfering with stroke control assembly or hydra-brake.
- Hypneumat units using offset heads have reduction in stroke length.
- Timing belt drive is 1:1 ratio.

NOTE:  
200 SERIES UNIT SHOWN

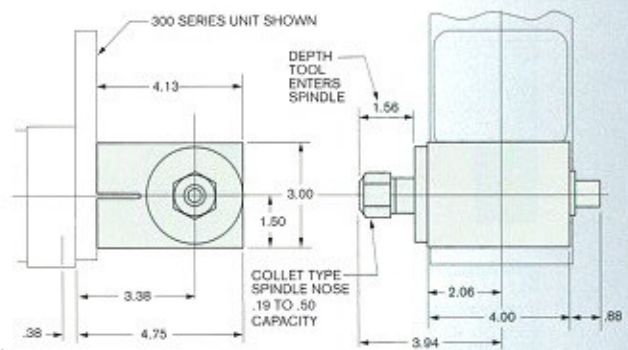


# SPECIAL ATTACHMENTS

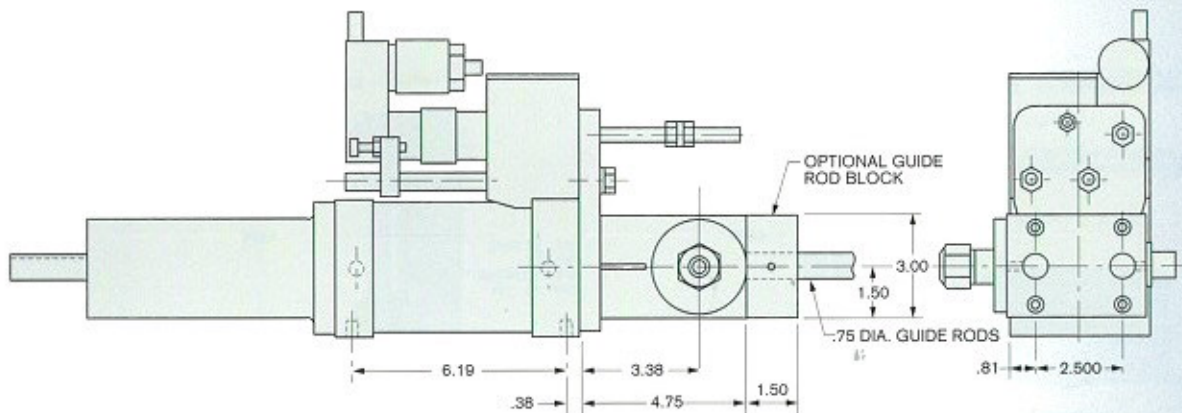
## ARBOR TYPE MILLING HEAD



## COLLET TYPE MILLING HEAD



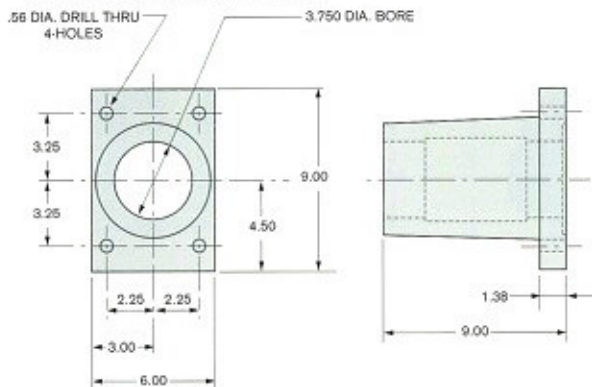
## RIGHT ANGLE MILLING HEAD FOR 200 & 300 SERIES UNITS



NOTE: Hypneumat unit stroke is reduced when using right angle milling head. Model DQ350 EHB shown.

## OPTIONAL COLUMN MOUNTING BASES

### 3.750 TABLE MOUNTING FLANGE



### 2.750 TABLE MOUNTING FLANGE

