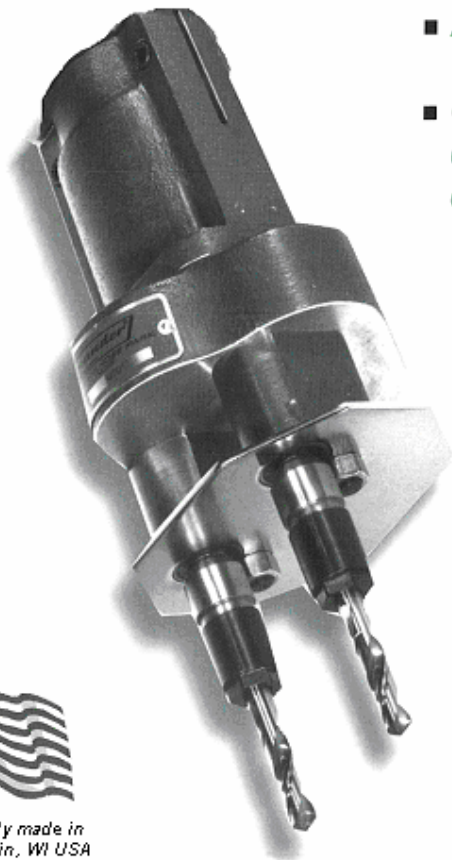


**Commander®****MULTIPLE SPINDLE DRILL HEAD****MULTI-DRILL®****MODEL****400**

## Adjustable Gear Driven Drill Head

- Available in 2 or 4 spindle models
- On 4 spindle models, holes to be drilled must be equally spaced on a common circle



Proudly made in  
Franklin, WI USA

The Model 400 Multi-Drill is an inexpensive, gear driven adjustable spindle drill head. Its light weight and compact size make it ideal for short run quick change over applications. We will adapt the 400 unit to any drill press.

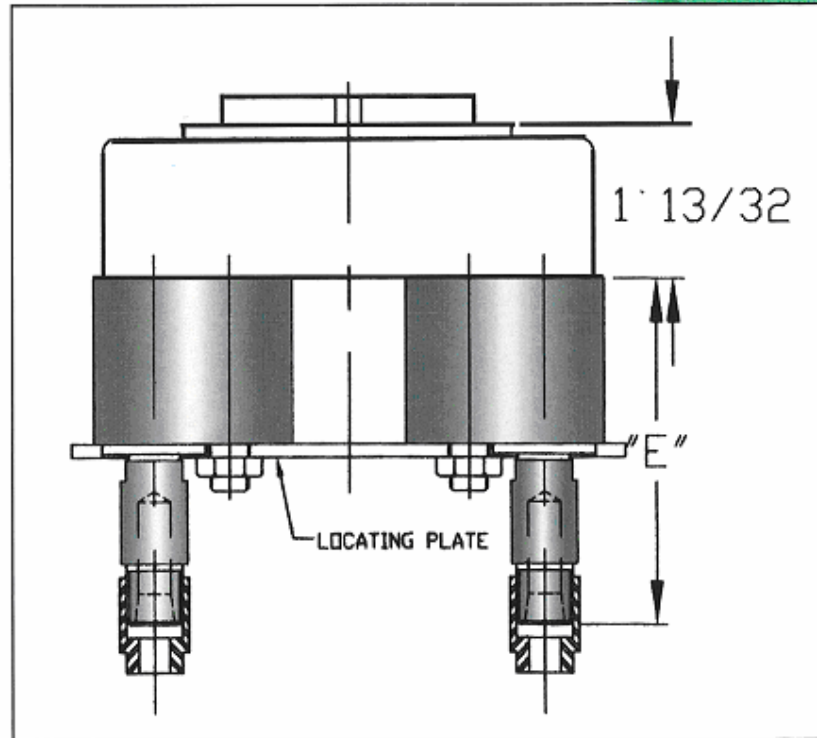
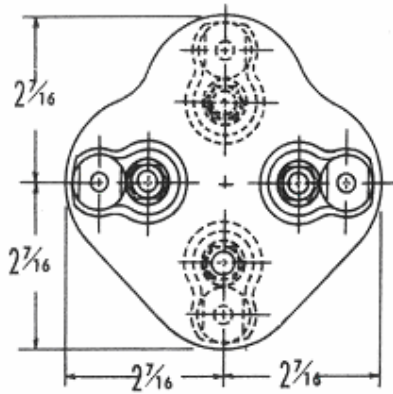
Commander Multi-Drill has on file spindle specifications for most machines. Please furnish us with the make and model number of the machine that our head will be adapted to. (See adaptations page)

In some cases there may be an additional charge for adaptation.

BASIC HEAD 400	ITEM #
Basic Unit without Adaptation 400 2-Spindle Head (No Spindles)	C70190
Basic Unit with Adaptation 400 2-Spindle Head (No Spindles)	C70191
Basic Unit without Adaptation 400 4-Spindle Head (No Spindles)	C70200
Basic Unit with Adaptation 400 4-Spindle Head (No Spindles)	C70201

SPECIFICATIONS	
Maximum Number of Spindles	2 or 4
Maximum Horsepower Transmitted	1
Maximum Torque Transmitted	40 in./lbs.
Maximum Spindle RPM	1800
Maximum Drill Press RPM	900
Minimum Center Distance (2-Spin.)	7/8
Minimum Center Distance (4-Spin.)	1
Maximum Drilling Area	3-7/8*
Ratio	1:2.2 inc.
Approximate Drill Capacity in mild steel	3/16

[www.commandermultidrill.com](http://www.commandermultidrill.com)



For collet information see the Commander collets pages.

**COMMANDER 400 HEAD SPINDLE ASSEMBLIES**

DESCRIPTION	MIN. CENTERS 2-SPIN	MIN. CENTERS 4-SPIN	PART NO. 2-SPIN	PART NO. 4-SPIN	LENGTH DIM. "E"
<b>STANDARD SPINDLE ASSEMBLIES</b>					
375 COLLET TYPE 1/32 TO 3/8 DIAMETER	7/8	1	C74140	C74156	3 9/16
375 BORED TYPE (SPECIFY EXACT SIZE MAX. .500)	7/8	1	C74143	C74159	3 3/8
#1 MORSE TAPER TYPE	7/8	1 3/16	C74141	C74157	4 15/16
375 COLLET TYPE 1/32 TO 3/8 DIAMETER (HEAVY DUTY)	1 1/4	1 1/4	C74148	C74148	3 5/8
375 STUB ASA COLET TYPE (HEAVY DUTY)	1 1/4	1 1/4	C74186	C74186	4
<b>TAP SPINDLES</b>					
Tap spindles allow tap float and find the drilled or cored holes, thereby compensating for small mis-alignment.					
Q.T. FLOATING TAP SPINDLES (HEAVY DUTY)	1 1/4	1 1/4	C74184	C74184	3 9/16
Q.C. FLOATING TAP SPINDLES (BILZ) (HEAVY DUTY)	1 1/4	1 1/4	C74185	C74185	3 9/16
<b>ADJUSTABLE DEPTH</b>					
Permits holding of fine adjustment in drill or tap depths. Adjustable through a range of 5/16" in steps of .001.					
375 COLLET TYPE 1/32 TO 3/8 DIAMETER	7/8	1	C74152	C74166	3 5/8
375 COLLET TYPE 1/32 TO 3/8 DIAMETER (HEAVY DUTY)	1 1/4	1 1/4	C74178	C74178	3 3/4
375 BORED TYPE (HEAVY DUTY)	1 1/4	1 1/4	C74210	C74210	3 3/4
<b>PITCH COMPENSATING</b>					
Permits simultaneous tapping with taps of different pitch. Use with coarse pitch taps. 5/16 compensation					
375 COLLET TYPE 1/32 TO 3/8 DIAMETER	7/8	1	C74154	C74167	4 5/16
375 COLLET TYPE 1/32 TO 3/8 DIAMETER (HEAVY DUTY)	1 1/4	1 1/4	C74183	C74183	4 7/16
375 BORED TYPE (HEAVY DUTY)	1 1/4	1 1/4	C74211	C74211	4 7/16
<b>400 HEAD ACCESSORIES</b>					
Locating Templates lock the spindles in position.					
LOCATING TEMPLATES (W/ HEAVY DUTY SPIN. ONLY)			C90300	C90301	